



Hard Chess Puzzle # 0101

By

G Bud Games
<https://gbud.in>

January 10, 2022

Contents

Hard Chess puzzle # 0101 - Remove opponent's rook	3
Hard chess puzzle 0101	3
Solution to hard chess puzzle 0101	4
Solution 1	4
Right moves for the solution to the hard chess puzzle 0101	8
Explanation for the moves	8
Categories of hard chess puzzle 0101	8
hard chess puzzle 0101 chart	9
How to view the solution to hard chess puzzle 0101	11
How to get help for moves in the hard chess puzzle 0101	12
Play chess for free	13

List of Figures

1	Solve this hard chess puzzle 0101. Remove opponent's rook @ https://gbud.in/gfdd9c3	3
2	Solve this hard chess puzzle online with solution @ https://gbud.in/gfdd9c3	3
3	Initial board position of hard chess puzzle 0101	4
4	Re1	5
5	Qxb4+	5
6	Kxb4	6
7	Ba5+	6
8	Ka3	7
9	Bxe1	7
10	hard chess puzzle 101 chart 1	9
11	hard chess puzzle 101 chart 2	10
12	hard chess puzzle 101 chart 3	10
13	hard chess puzzle 101 chart 4	11
14	Click the solution button to view solutions @ https://gbud.in/gfdd9c3	11
15	Click the help button to get help on next move @ https://gbud.in/gfdd9c3	12
16	Solve more hard puzzles @ https://gbud.in/chshdpz	12
17	Solve other puzzles @ https://gbud.in/chsgppz	12
18	Play chess online for free. Solve puzzles and play with friends	13
19	Solve this puzzle online by scanning this QR code or go to the link below	14

Hard Chess puzzle # 0101 - Remove opponent's rook

Solve this hard chess puzzle and improve your chess games through improvement of your chess strategies and chess tactics. This hard puzzle is a subset of [kids games](#).

Puzzle No : 0101

Difficulty level : hard

Description : Remove opponent's rook

Next Move : Black

Player level : Advanced

Short URL for puzzle : <https://gbud.in/gfdd9c3>

Hard chess puzzle 0101

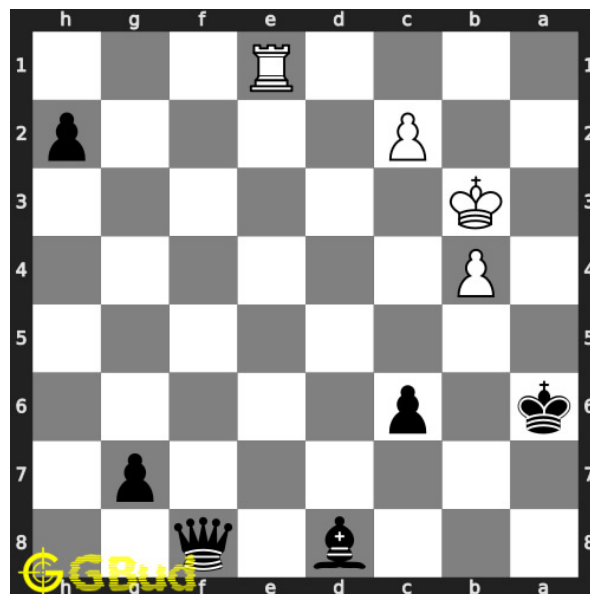


Figure 1: Solve this hard chess puzzle 0101. Remove opponent's rook @ <https://gbud.in/gfdd9c3>



Figure 2: Solve this hard chess puzzle online with solution @ <https://gbud.in/gfdd9c3>

Dont forget to check out [chess puzzles](#), [easy chess puzzles](#), [medium chess puzzles](#), [hard chess puzzles](#) and [chess puzzles collections](#) .

Solution to hard chess puzzle 0101

At this puzzle, next [move](#) is by [Black](#). The objective of the puzzle is to remove opponent's rook.

See the interactive solution at the [puzzle page](#)

Solution 1

Initial board position This is the initial board position of hard chess puzzle 0101.

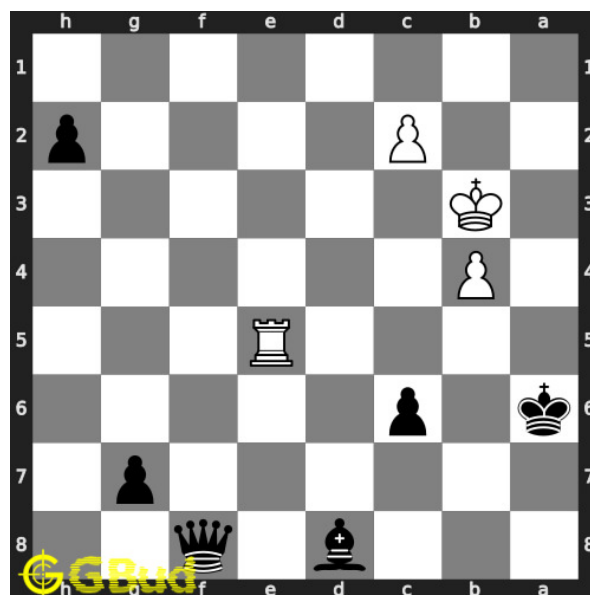


Figure 3: Initial board position of hard chess puzzle 0101

Move 1 Move by white

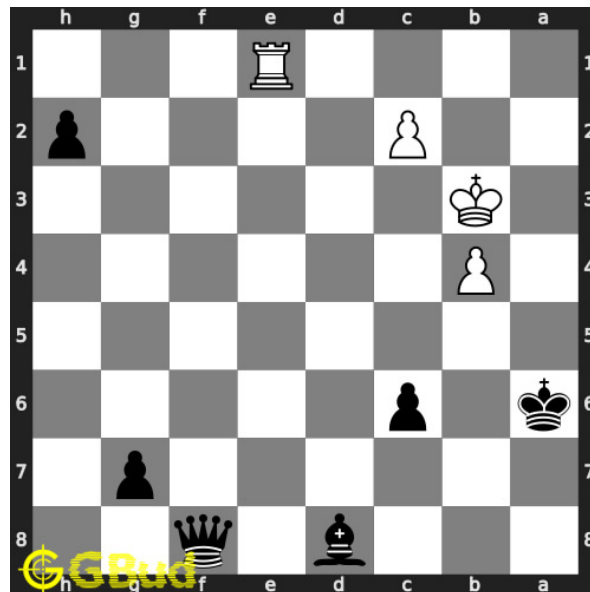


Figure 4: Re1

opponent wants to stop the [promotion](#) of your [pawn](#).

Move 2 Move by black

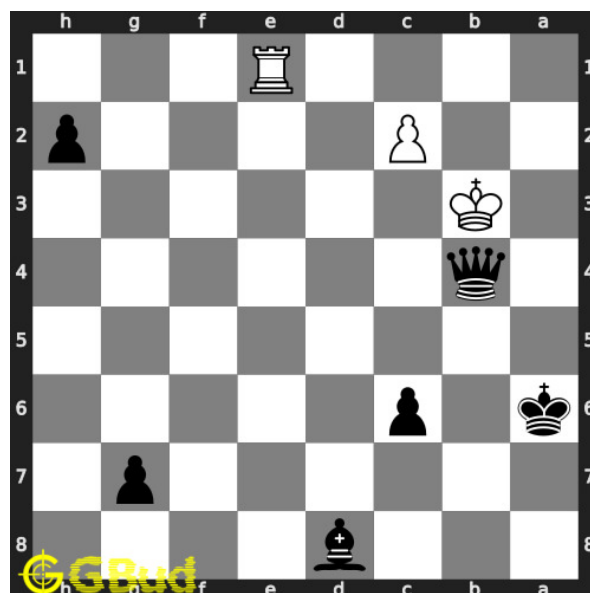


Figure 5: Qxb4+

your [queen sacrifices](#) itself to [capture](#) the [rook](#) in next [move](#). the [queen](#) also [forks](#) the [king](#) and [rook](#)

Move 3 Move by white

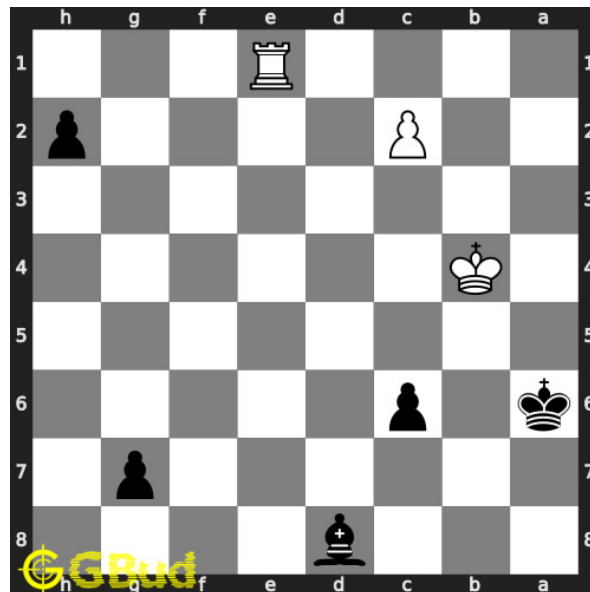


Figure 6: Kxb4

opponent captures the queen as this is a gain for them

Move 4 Move by black

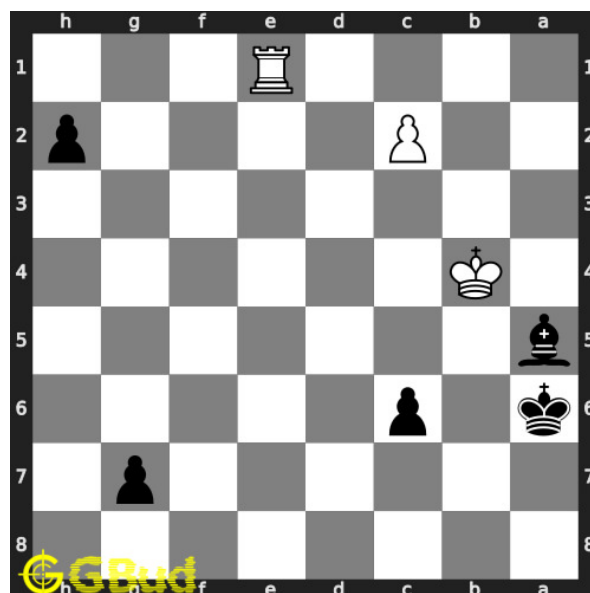


Figure 7: Ba5+

your bishop moves to a5 and gives check to opponent. it also has an x-ray attack on the opponent's rook. opponent's king can't capture your bishop since it is supported by king.

Move 5 Move by white

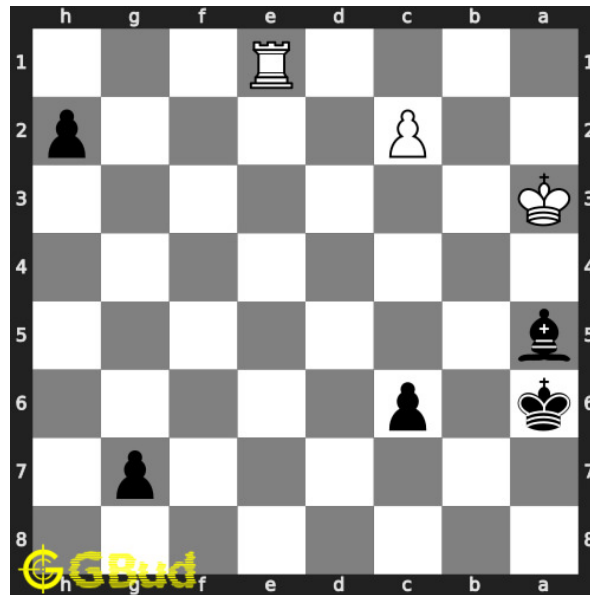


Figure 8: Ka3

opponent's **king** escapes from the **check** threat by moving to a3

Move 6 Move by black

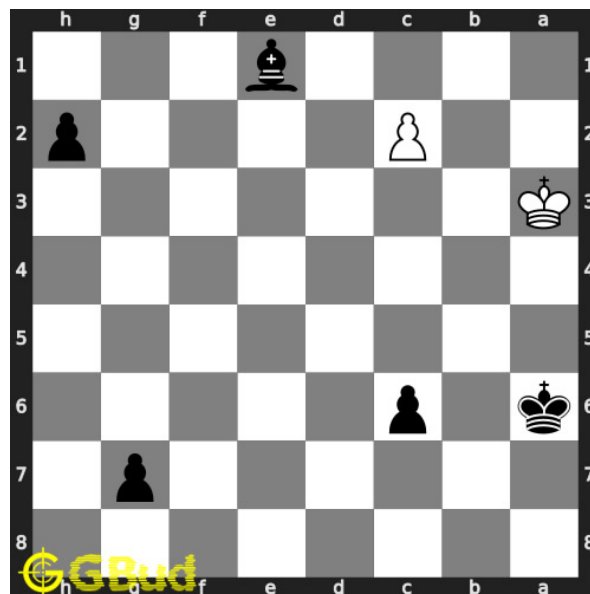


Figure 9: Bxe1

your **bishop captures** opponents hanging **rook** through a skewer attack. now you can promote your **pawn** to a **queen**. this is how you can remove opponent's **rook**.

Right moves for the solution to the hard chess puzzle 0101

Based on the objective of the puzzle, you have to make the right moves. Following are the right moves

1. Qxb4+, Ba5+, Bxe1

Explanation for the moves

1. Re1 - Opponent wants to stop the promotion of your pawn.
2. Qxb4+ - Your queen sacrifices itself to capture the rook in next move. The queen also forks the king and rook
3. Kxb4 - Opponent captures the queen as this is a gain for them
4. Ba5+ - Your bishop moves to a5 and gives check to opponent. It also has an x-ray attack on the opponent's rook. Opponent's king can't capture your bishop since it is supported by king.
5. Ka3 - Opponent's king escapes from the check threat by moving to a3
6. Bxe1 - Your bishop captures opponents hanging rook through a skewer attack. Now you can promote your pawn to a queen. This is how you can remove opponent's rook.
7. For right move - You used skewer attack to remove the opponent's rook. Keep it up
8. For wrong move - You could have sacrificed the queen to remove the rook. You missed it. Try again

Categories of hard chess puzzle 0101

This hard chess puzzle falls in these categories.

1. [Hard chess puzzles](#)
2. [Sacrifice puzzles in chess](#)
3. [Gain puzzles in chess](#)
4. [Fork puzzles in chess](#)
5. [Strategy puzzles in chess](#)
6. [Skewer puzzles in chess](#)
7. [Queen puzzles in chess](#)
8. [Bishop puzzles in chess](#)

hard chess puzzle 0101 chart

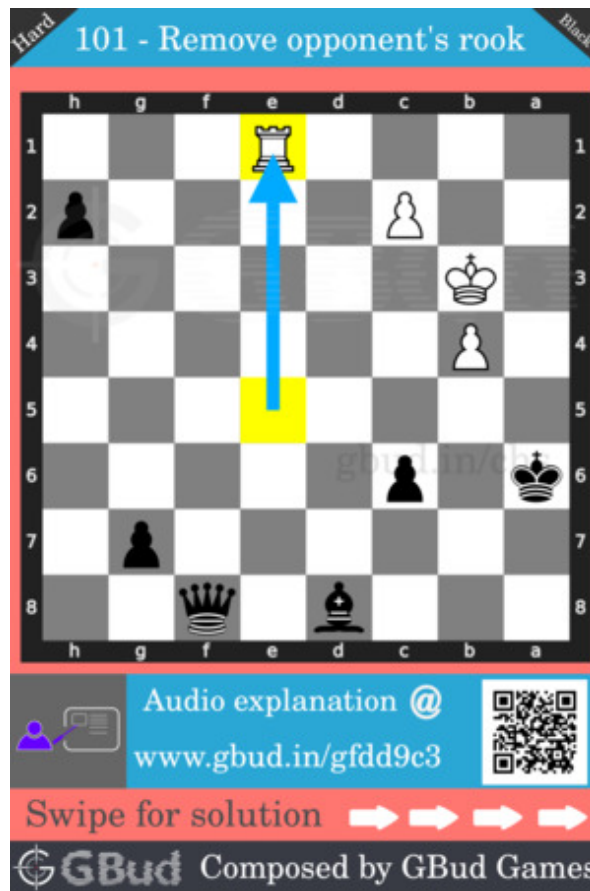


Figure 10: hard chess puzzle 101 chart 1



Figure 11: hard chess puzzle 101 chart 2



Figure 12: hard chess puzzle 101 chart 3

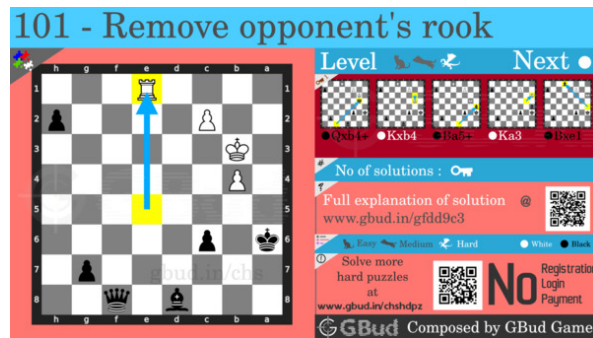


Figure 13: hard chess puzzle 101 chart 4

How to view the solution to hard chess puzzle 0101

To view the [solution to this puzzle](#), follow the steps given below

1. Go to the [puzzle page](#)
2. Click the solution button (Key as shown [below](#)) to view the solution

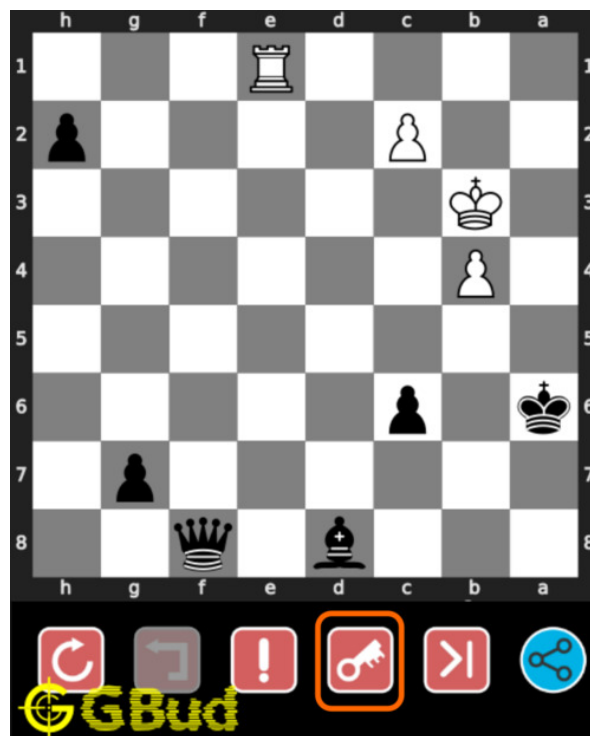


Figure 14: Click the solution button to view solutions @ <https://gbud.in/gfdd9c3>

How to get help for moves in the hard chess puzzle 0101

To get help or the possible next moves in the puzzle, , follow the steps given below

1. Go to the [puzzle page](#)
2. Click the help button (exclamation mark as shown [below](#)) to get help or suggestion on next possible [move](#)



Figure 15: Click the help button to get help on next move @ <https://gbud.in/gfdd9c3>



Figure 16: Solve more hard puzzles @ <https://gbud.in/chshdpz>



Figure 17: Solve other puzzles @ <https://gbud.in/chsgppz>

Play chess for free

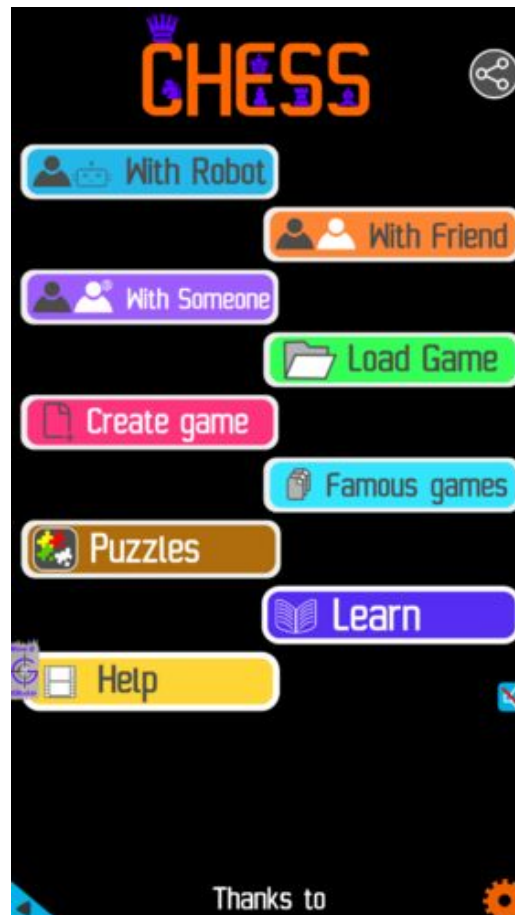


Figure 18: Play chess online for free. Solve puzzles and play with friends

Play chess for free at <https://gbud.in/chs>

We present you a platform to play chess online with friends for free. No need to install any app. You can play chess for free without registration or login.

Simple. You can do several chess related activities.

1. [solve chess puzzles](#)
2. [learn about chess](#)
3. [play chess with computer](#)
4. [play chess with friend](#)
5. [create your own chess games](#)

6. [fen viewer](#)
7. [fen editor](#)
8. [fen generator](#)
9. [pgn viewer](#)
10. [chess board editor](#)
11. [view famous chess games.](#)



Figure 19: Solve this puzzle online by scanning this QR code or go to the link below

<https://gbud.in/gfdd9c3>

Read the latest article on Hard Chess puzzle # 0101 - Remove opponent's rook by scanning this QR code or click the link

Previous article : « [Hard Chess puzzle # 0100 - Mate in 4 moves](#)

Next article : [Hard chess puzzles](#) »

[Back to top](#)

[Contact Us](#)